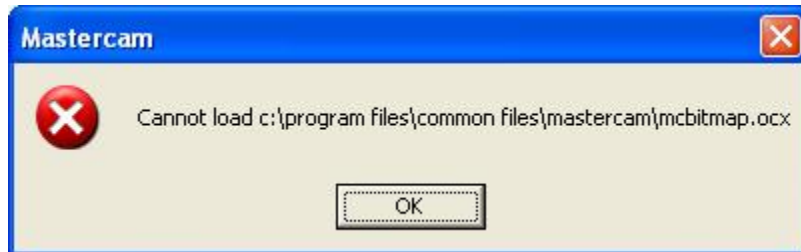


Question / Issue

(X9) After installing X3, V9 will not start producing a "Cannot load C:\program files\common\mastercam\mcbitmap.ocx" error

Answer / Solution

After installing X3, the below error message appears when starting Version 9:



To solve this problem, do the following:

- Browse to "C:\WINDOWS\system32".
- Copy the three files MCBitmap.ocx, MCInt.ocx and MCReal.ocx.
- Paste them into "C:\Program Files\Common Files\Mastercam". Be sure to backup the existing versions of these files before overwriting them.

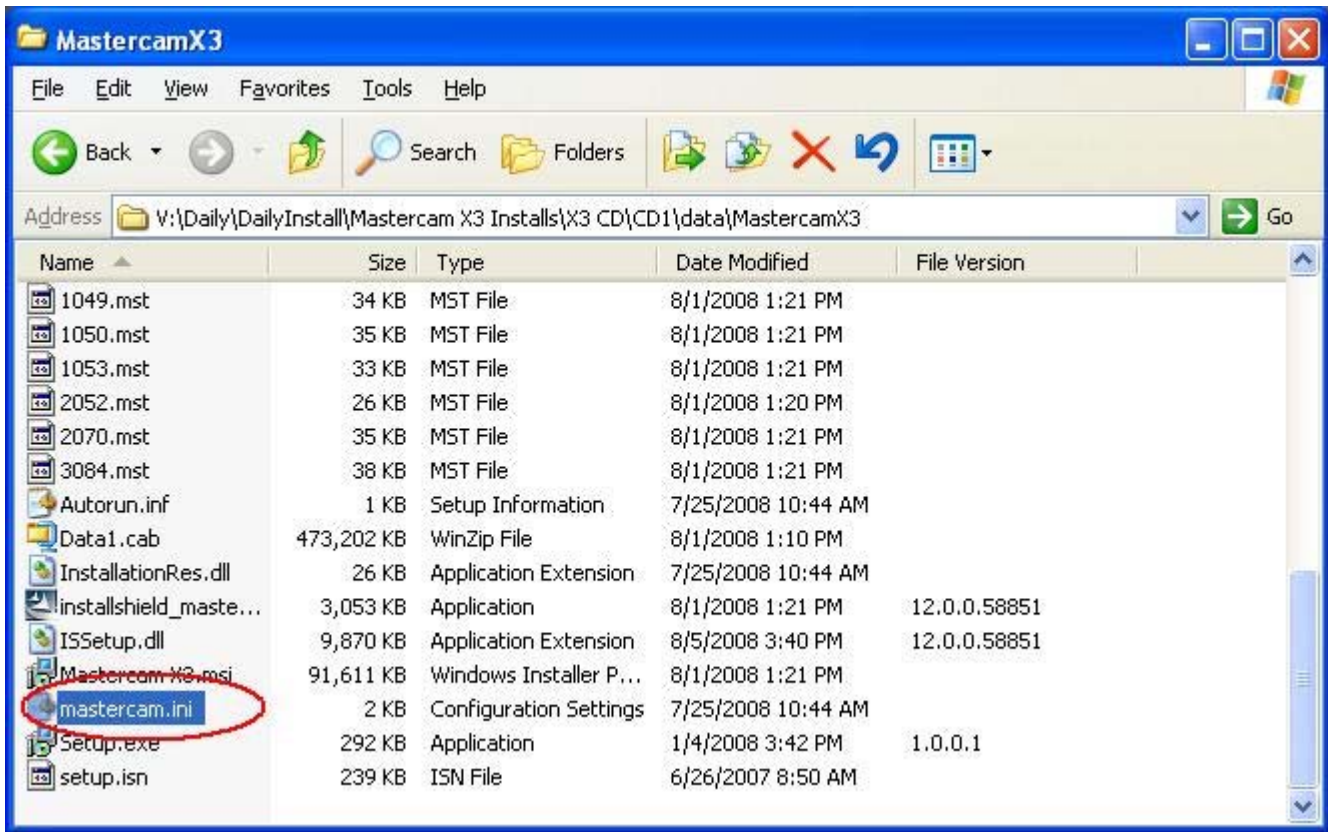
Version 9 should now start correctly.

Question / Issue

(Express installation) How do I change the default settings in the Express Installation?

Answer / Solution

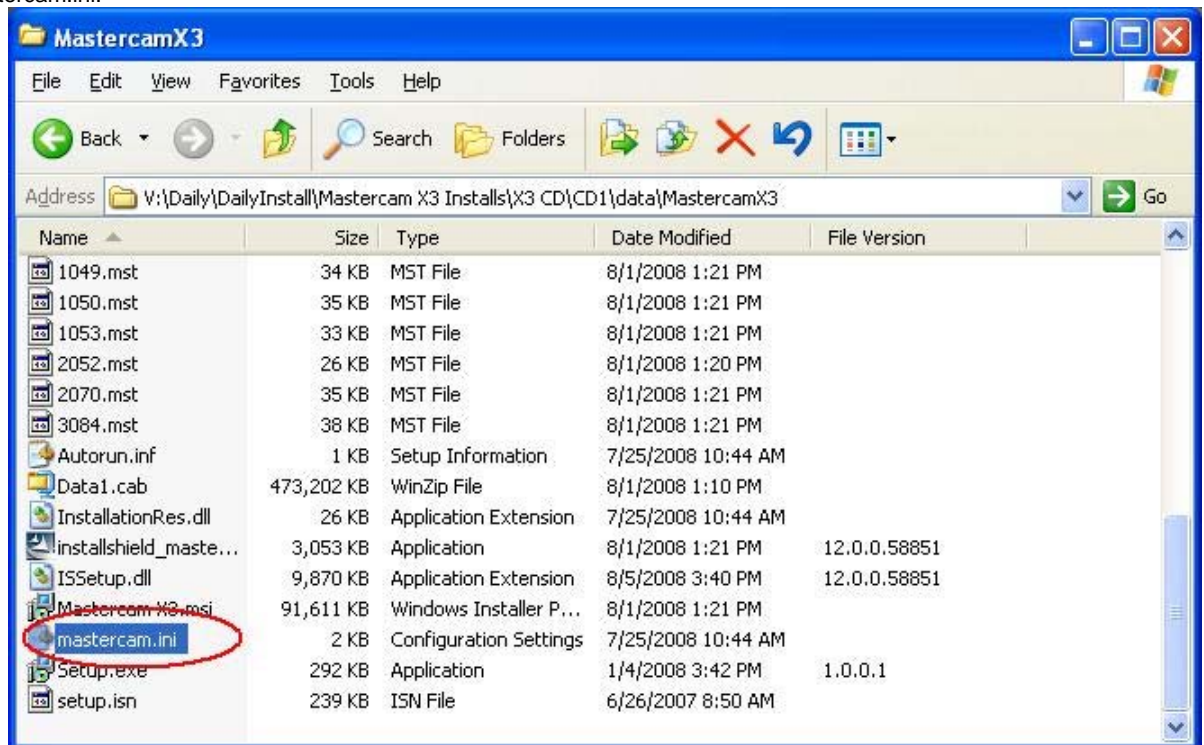
The Express Installation, new for X3, was created based on reseller demand for an installation with less user interaction. The problem with this is that there are a lot of assumptions that need to be made for Mastercam to install successfully:



We created the mastercam.ini file to make these assumptions customizable. For instance, a reseller may want the default units to be "metric". This can be changes in the *.ini file.

To change the values in the *.ini file:

1. Browse to the "data\MastercamX****" directory in CD1 (or in the DVD) of the Mastercam installation contents SAVED LOCALLY on your hard drive / network.
2. Open Mastercam.ini:



3. Edit any of the values you believe need to be changed.
4. Create a CD with the modified version of this file. The defaults set in the *.ini will now be used when running the Express Installation.

