

## Question/Issue

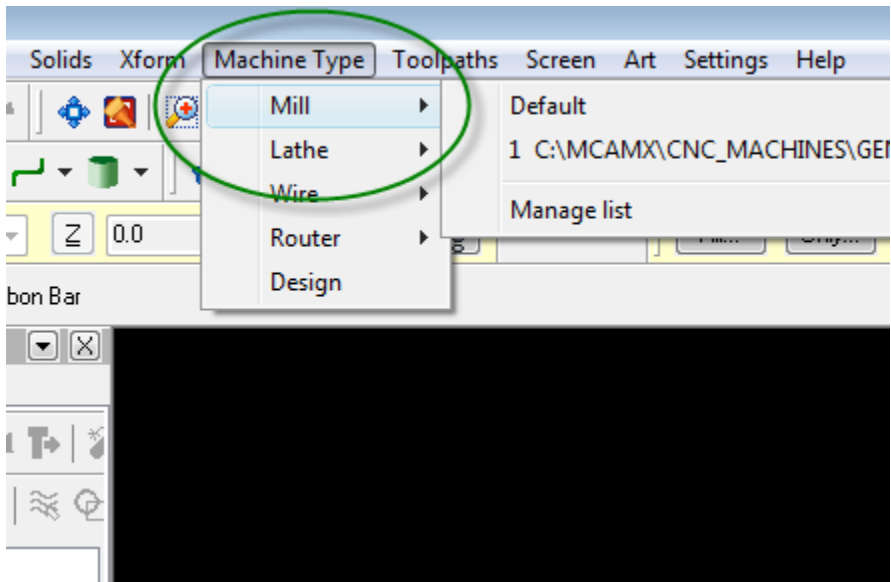
---

(Machine type) How do I add, or replace, the machine type?

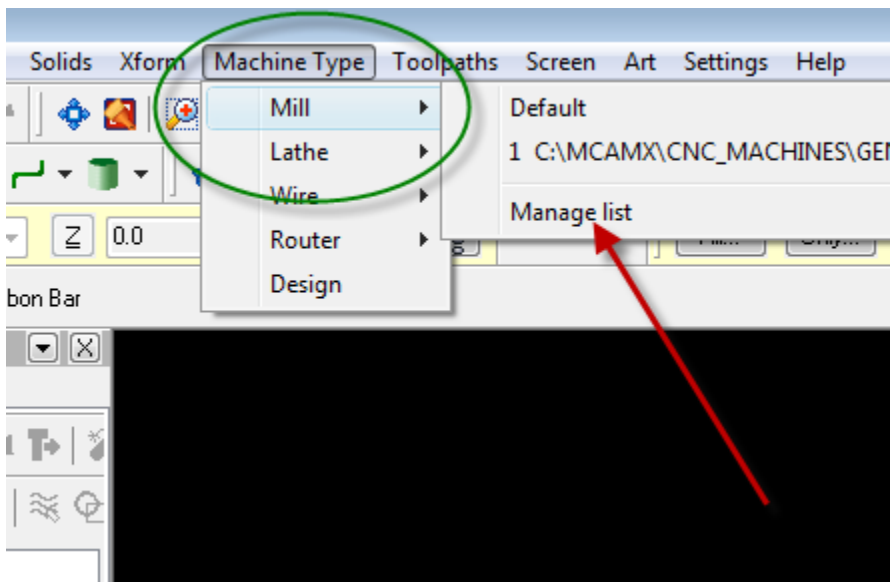
## Answer/Solution

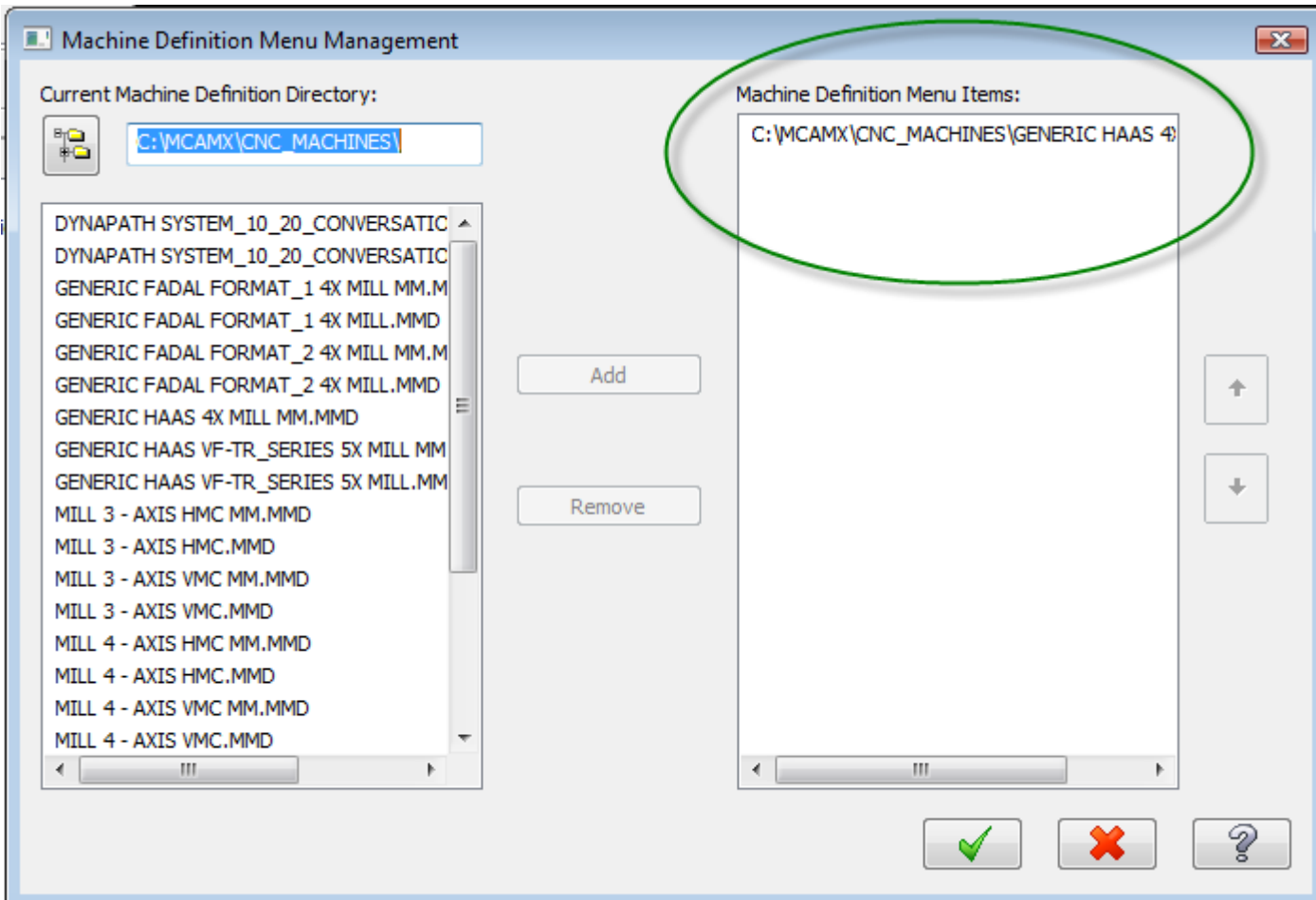
---

Select Machine type from the main menu.

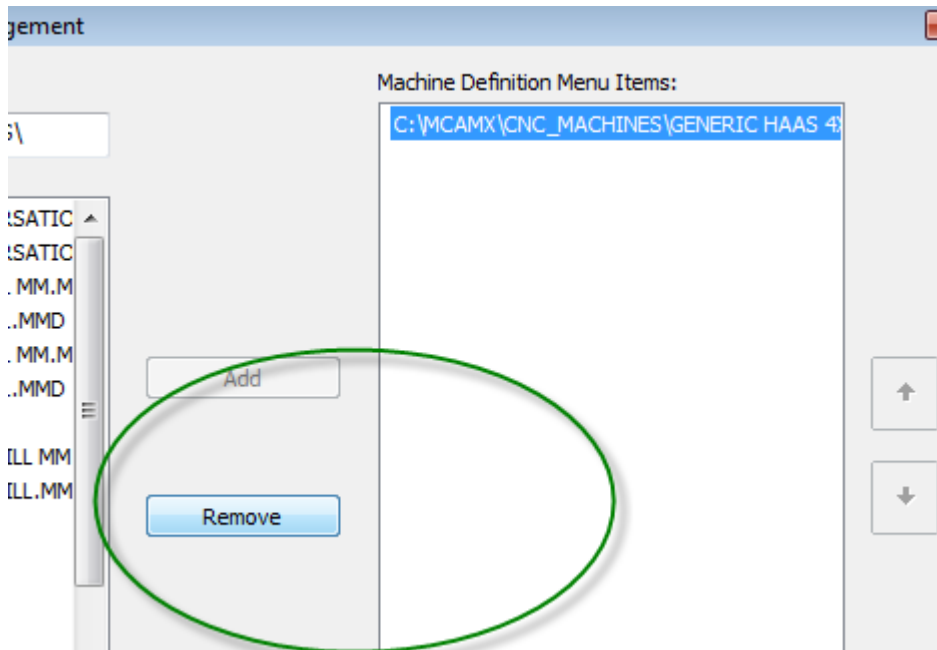


Select manage list as noted by red arrow below.

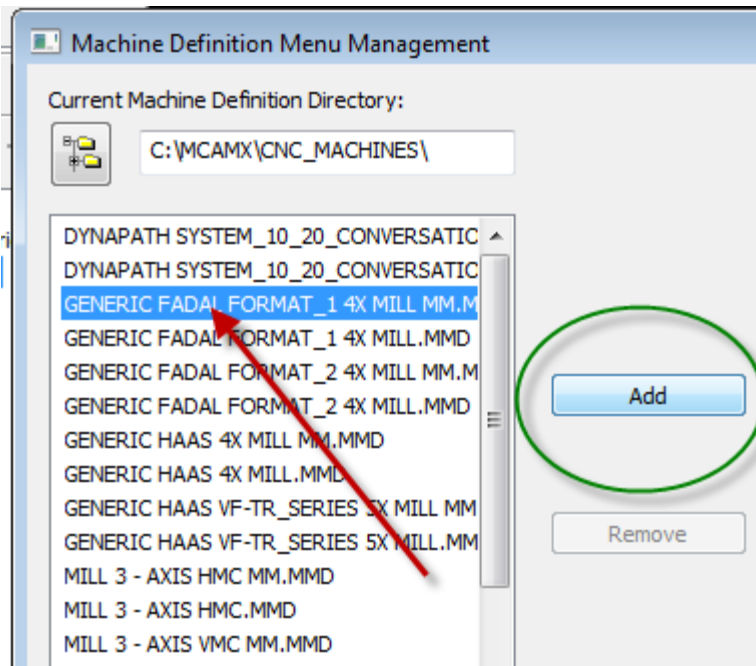




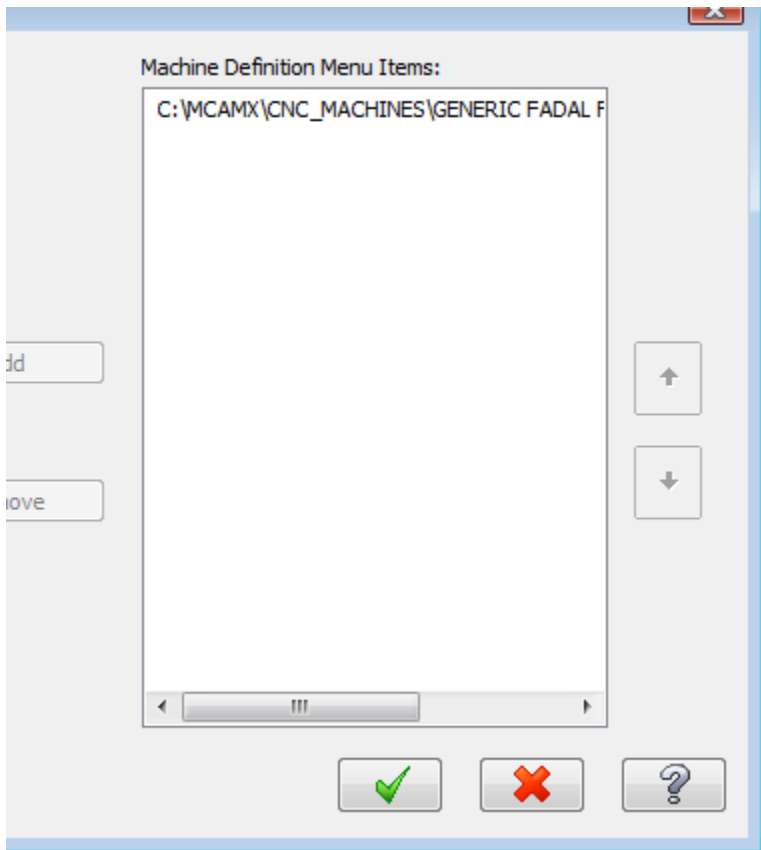
Management menu window opens. The green circle notes the existing machine. To remove it, highlight it and click...



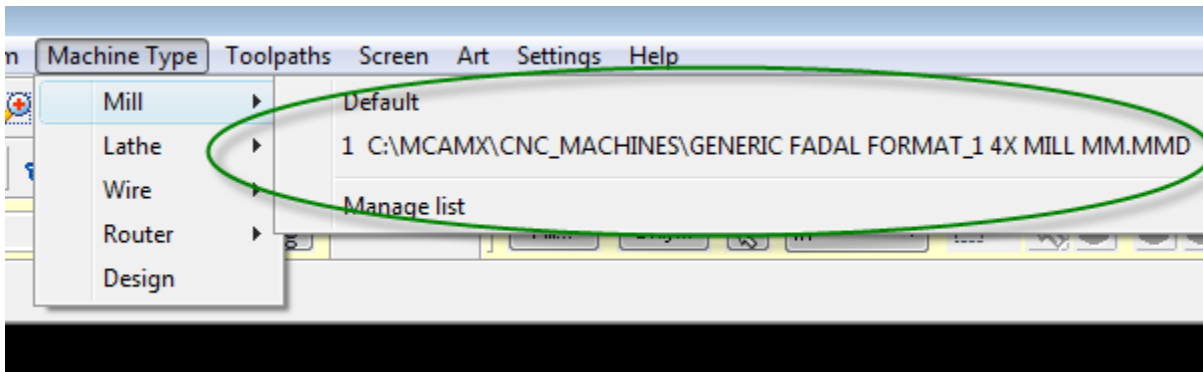
... Remove.



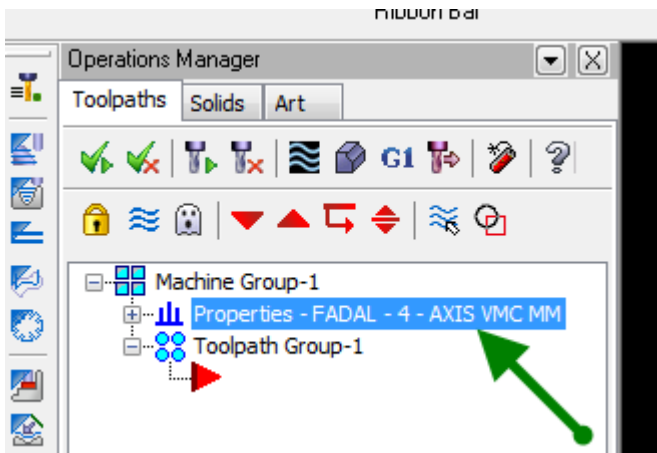
Highlight the machine you want from the list and click add.



Your new machine is now in the right column. Green check mark.



Select Machine Type from the main menu. Under the type , number 1 shows the added machine. Click on it



In the operations manager, under Toolpaths, The green arrow shows the current machine type under properties.