

## Question/Issue

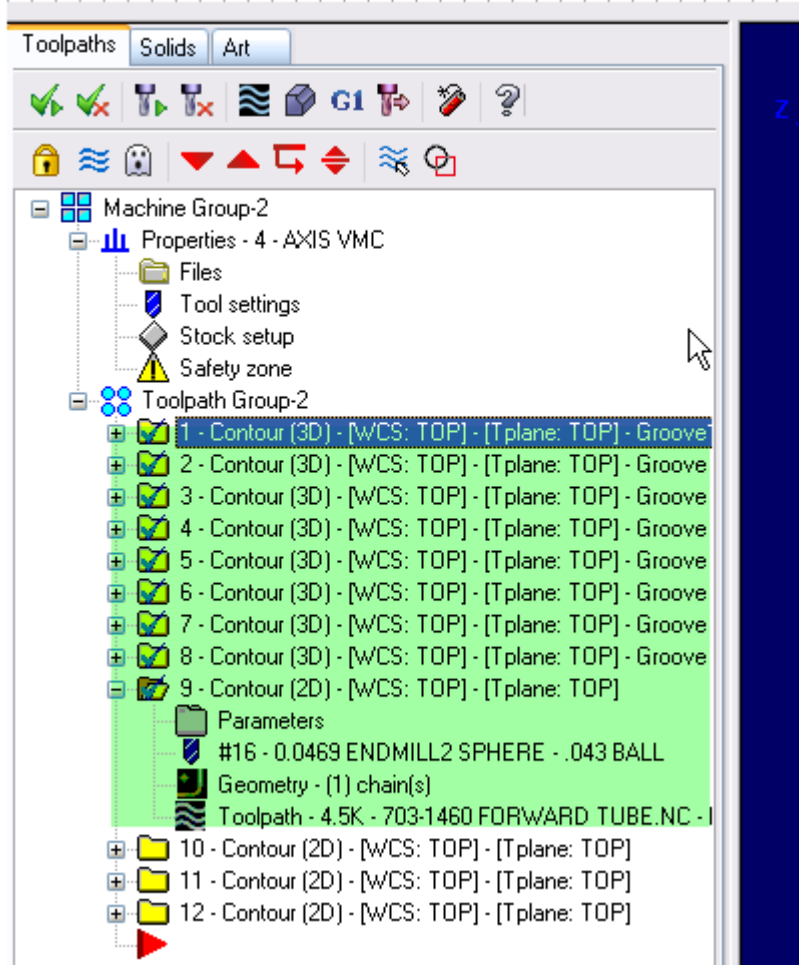
---

How do I edit common parameters?

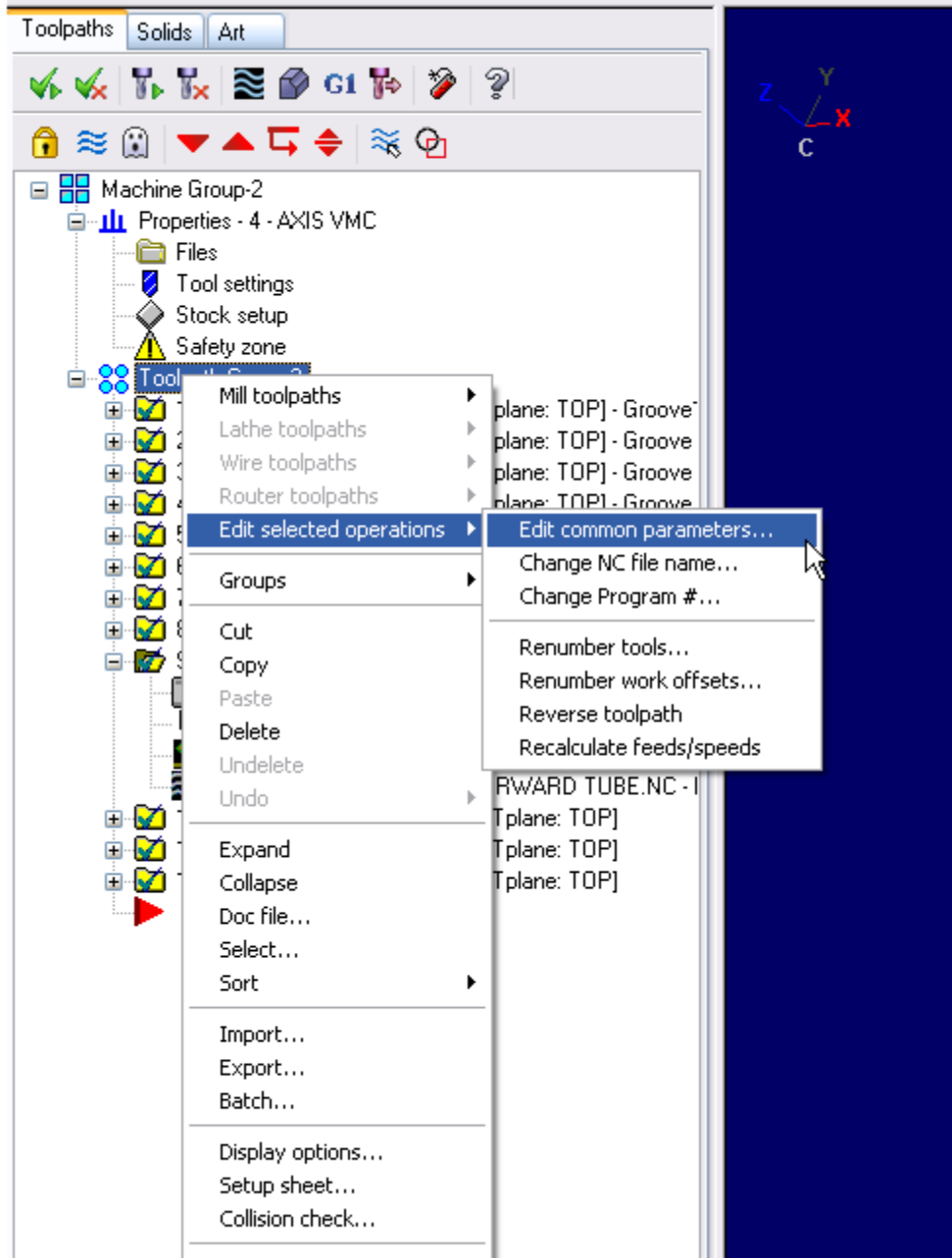
## Answer/Solution

---

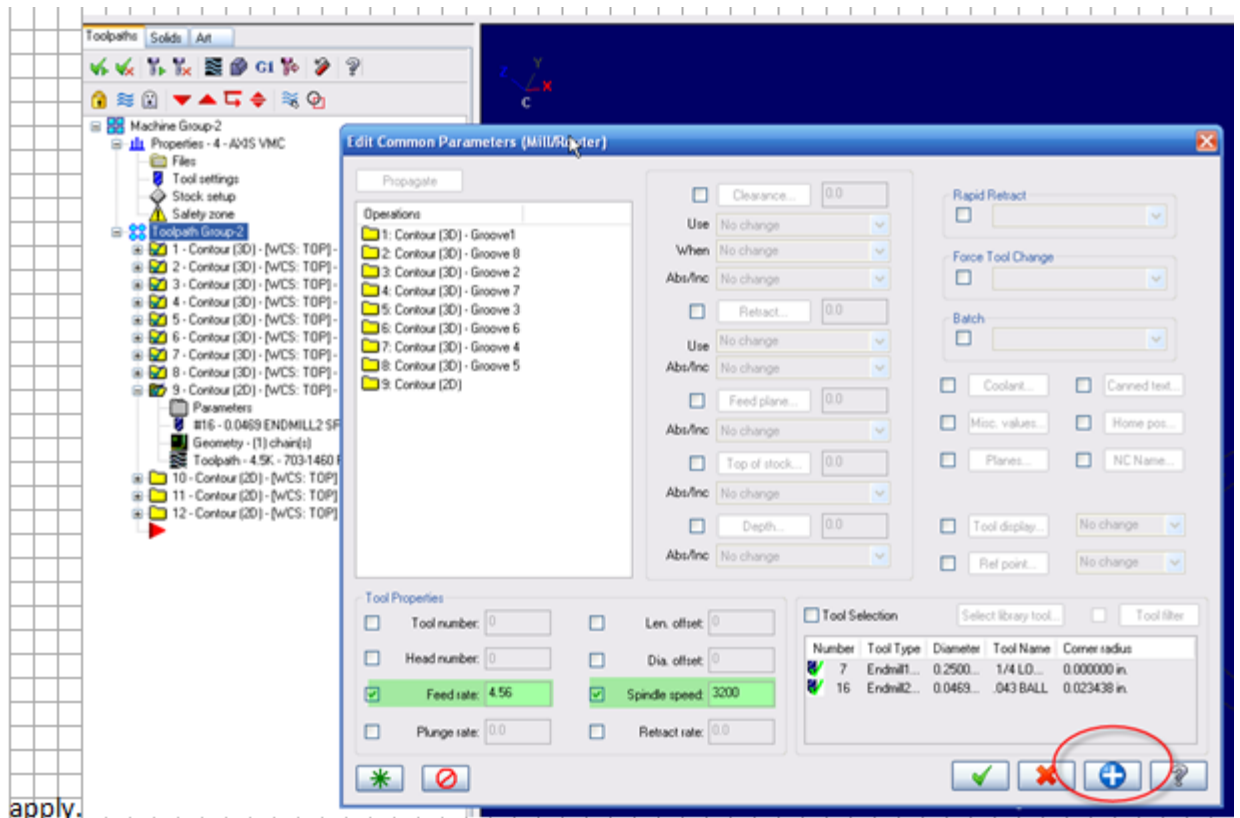
Check only the operations you wish to edit.



Right mouse click on the “Tool Group”, a list will appear; select “edit selected operations”, on the fly out menu select “edit common parameters”.



In the common parameters, place a check mark in the boxes that you wish to make active, place the new value in the box and press apply.



Hit the blue plus key to verify first. Green check mark.