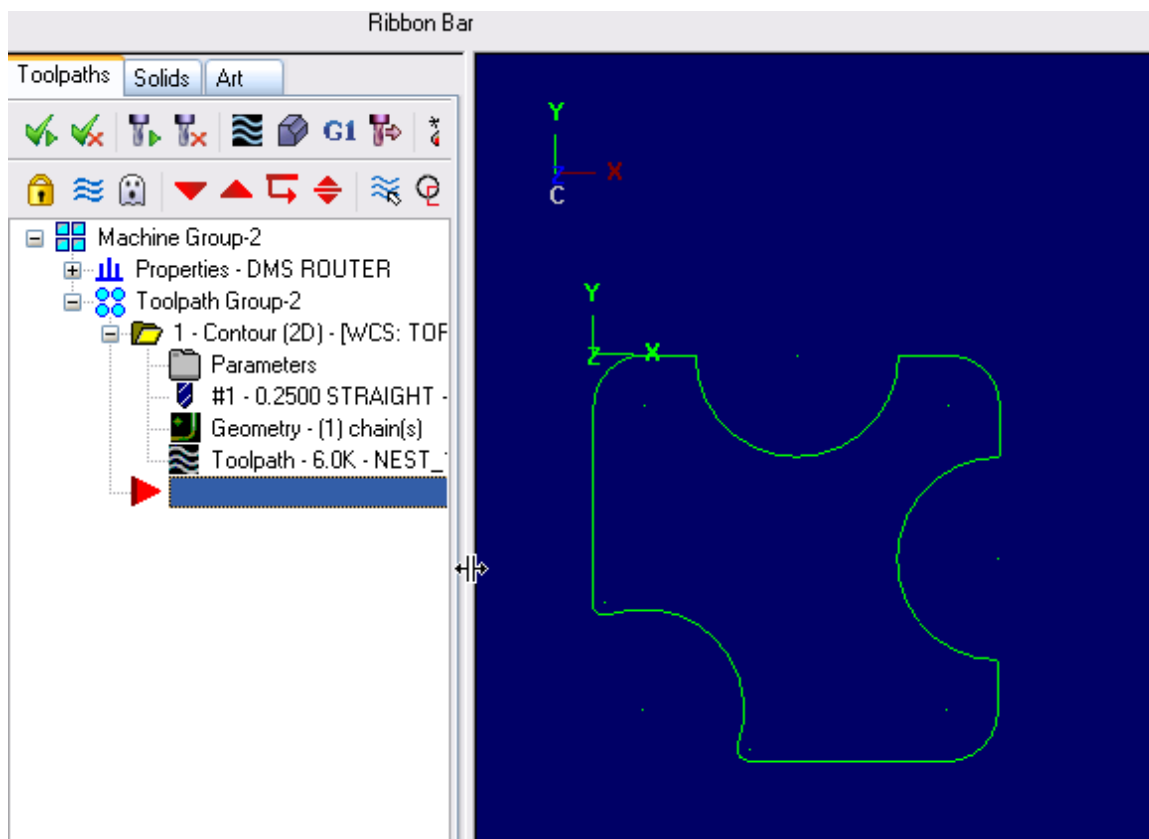


Question/Issue

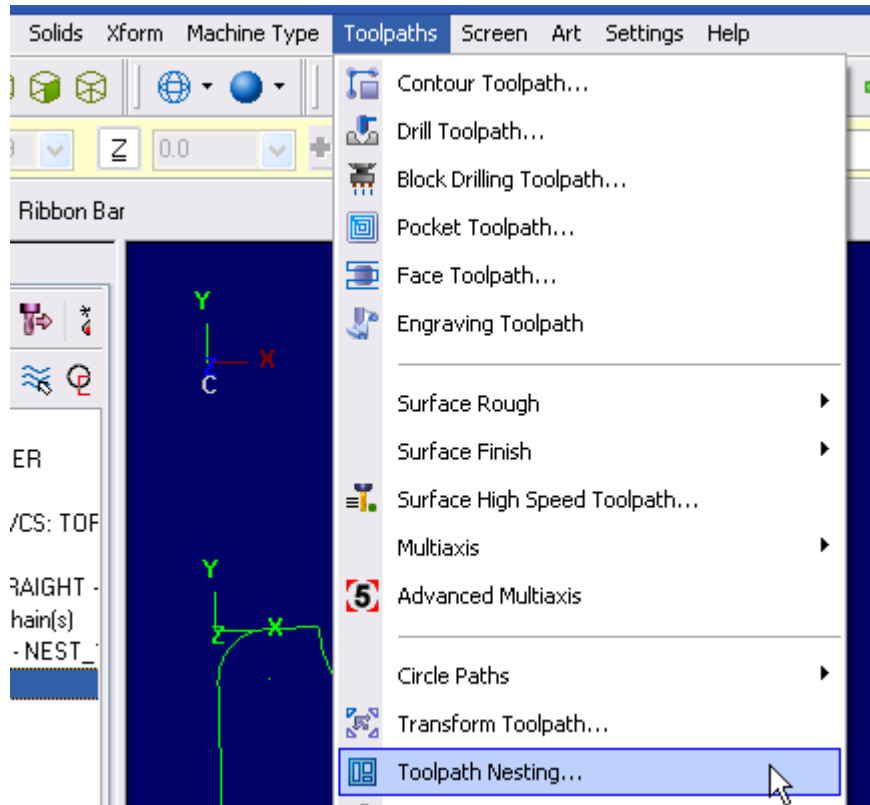
(Nesting) How do I perform nesting with true shapes?

True Shape Nesting

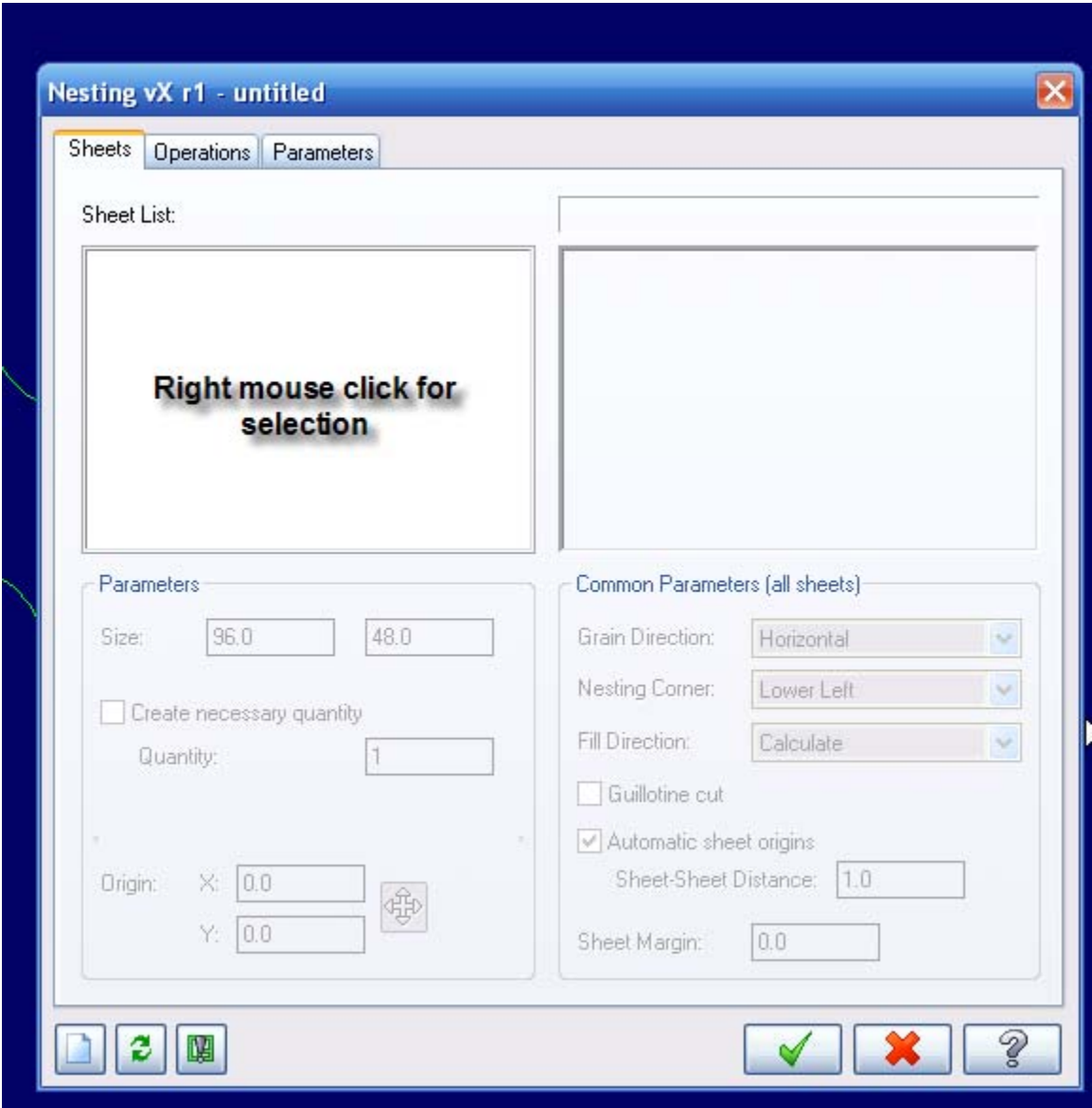
Part with toolpath to be nested.



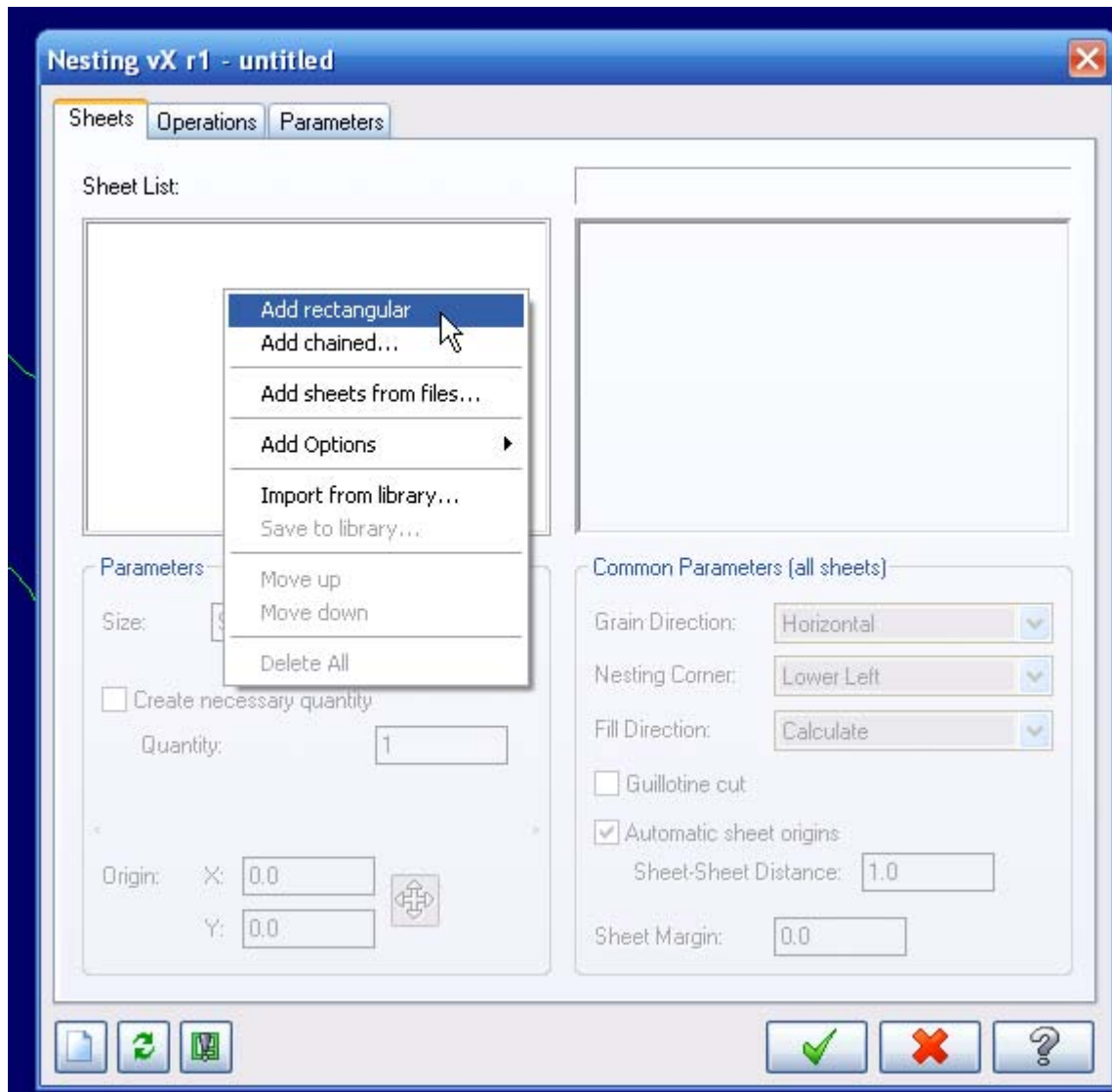
Select toolpaths



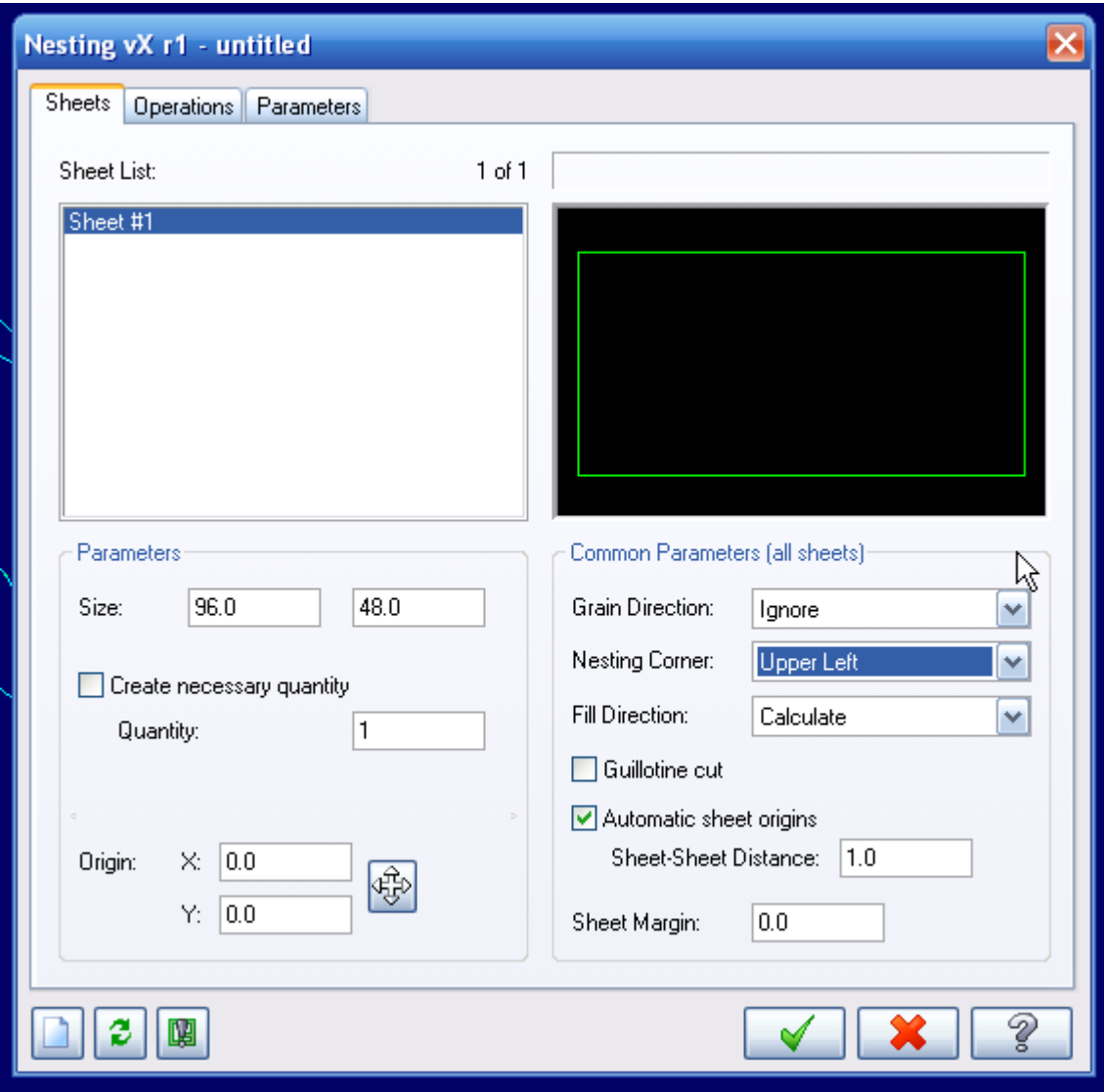
Right Mouse click in the left window for selection.



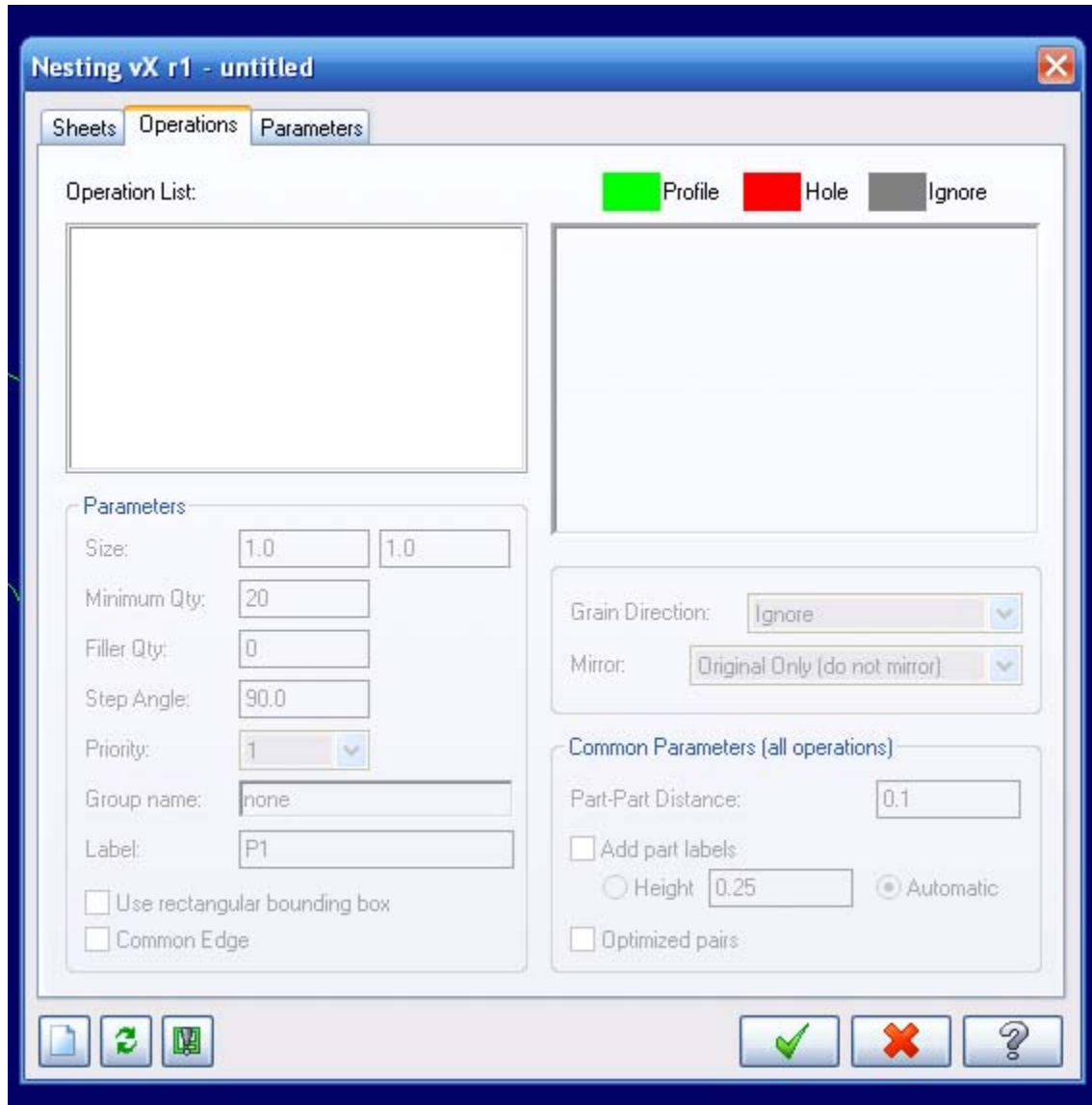
Select rectangular



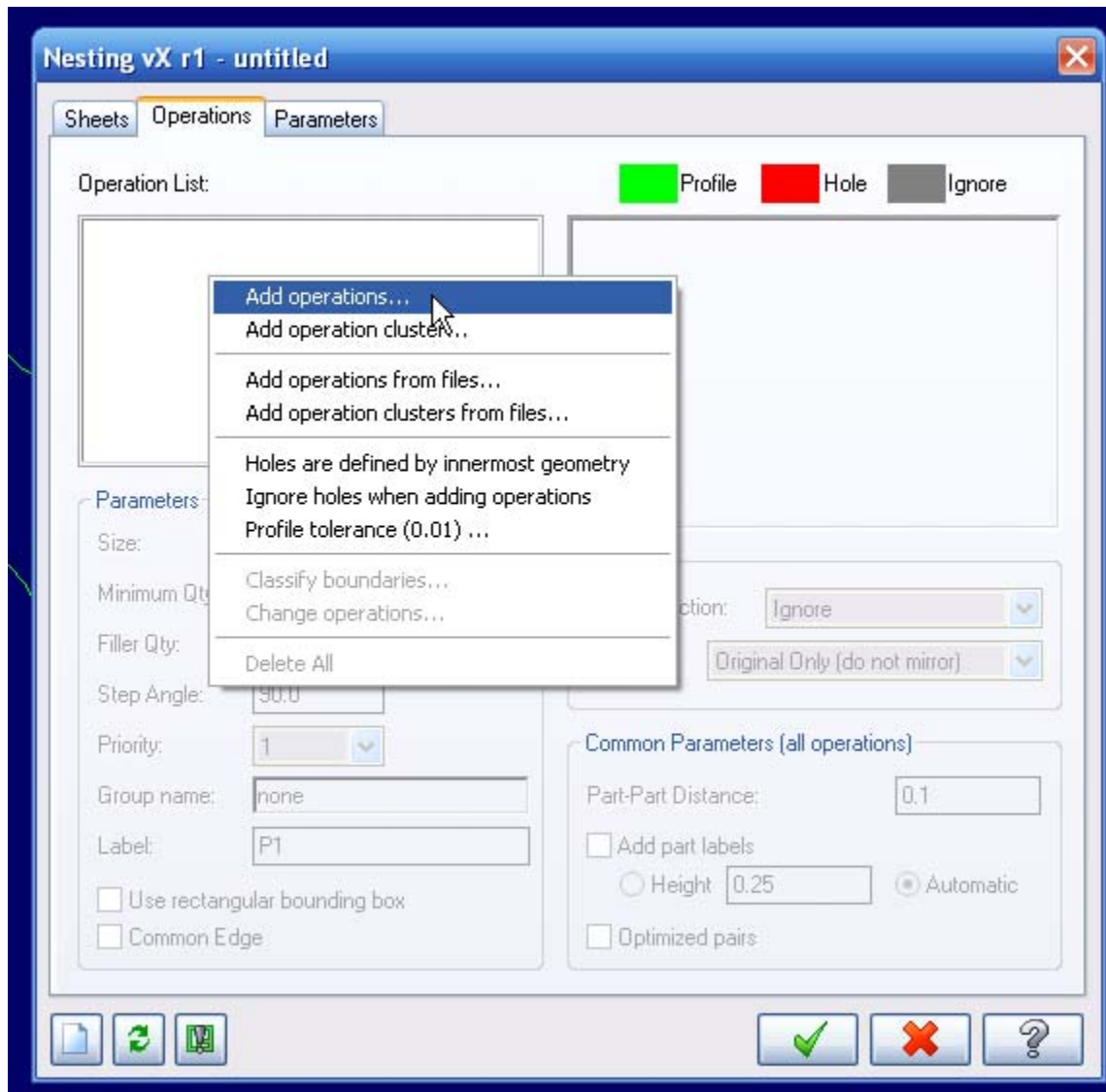
Ensure that the "Grain Direction" is set to "Ignore", and "Fill Direction" to "Calculate".



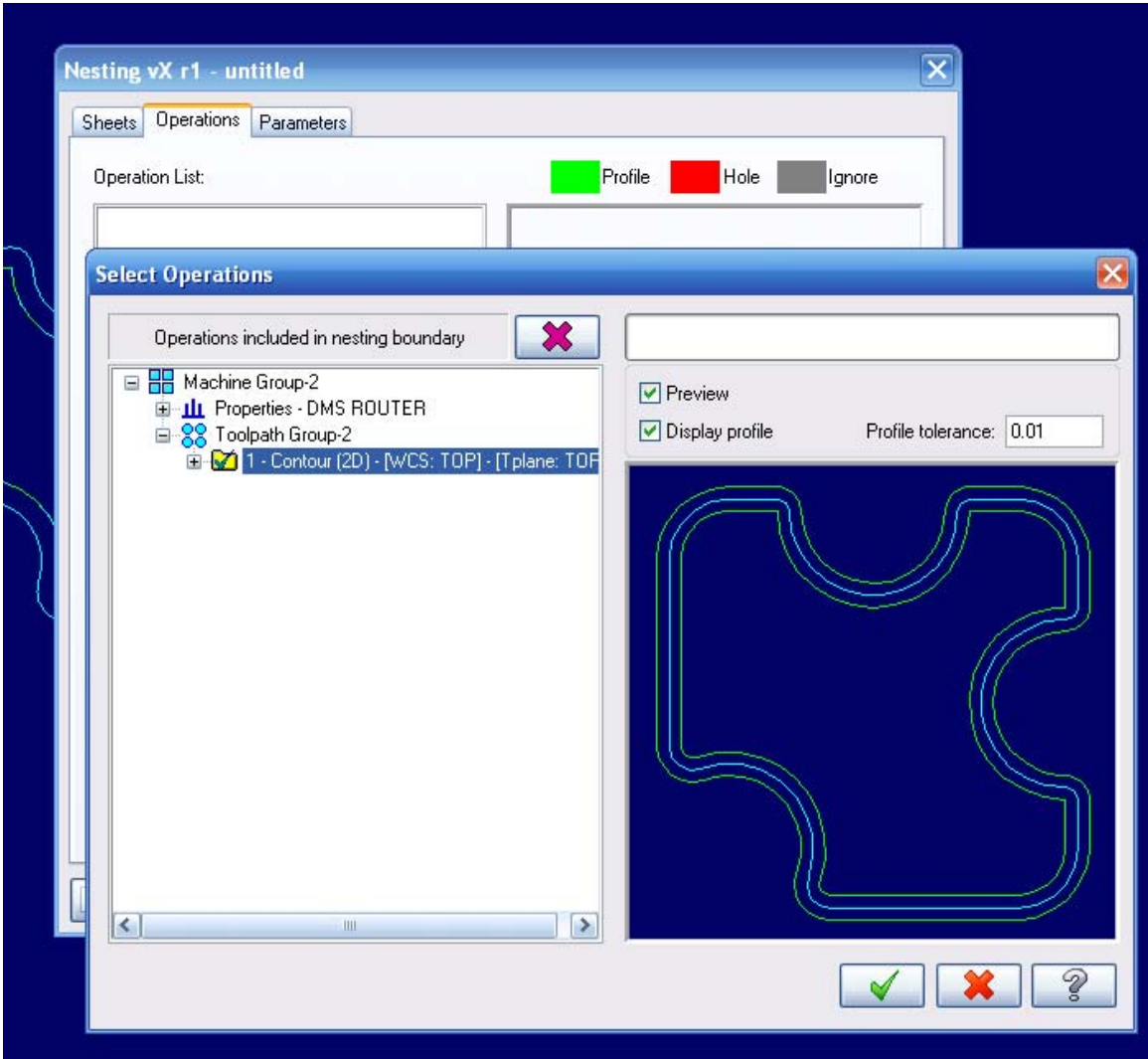
Select the "Operations" tab, and then right mouse click in the left window to pick the part operation.



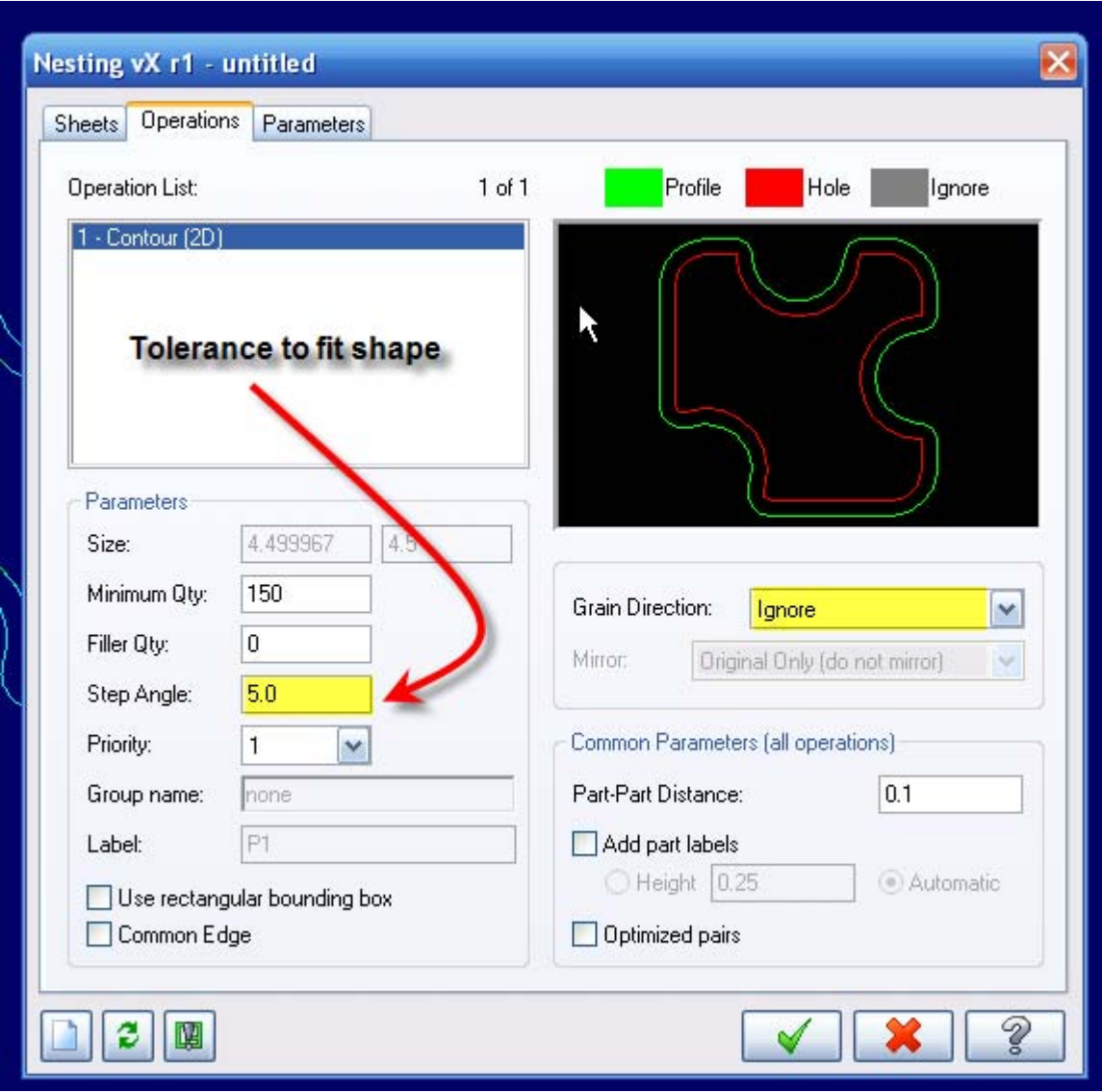
Add operations.



Place a check mark on the operation,



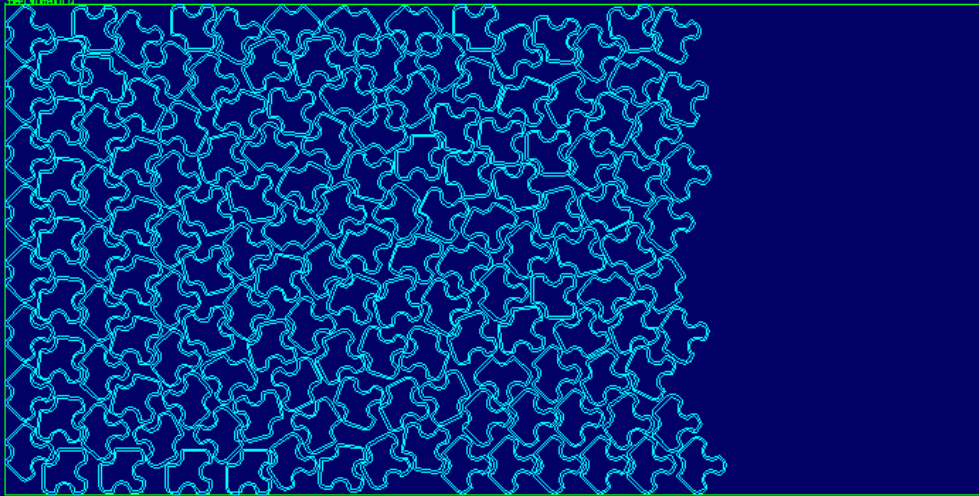
As stated below, "Step Angle" means what angle tolerance to use when calculating "fit". The larger the value here will give fewer options of fit. This setting of 5 degrees will allow Mastercam to "rotate" at 5 degree increments to obtain a fit.



Nesting Results ✖

Sheet (Result): Sheet #1 (Result 1) Utilization: 14.59%

Sheet #1 (Result 1)



Horizontal cut off Vertical cut off

Total Size:	96.20 x 48.20	Total Area:	4636.84
Nested Size:	70.85 x 48.10	Nested Area:	2421.97

