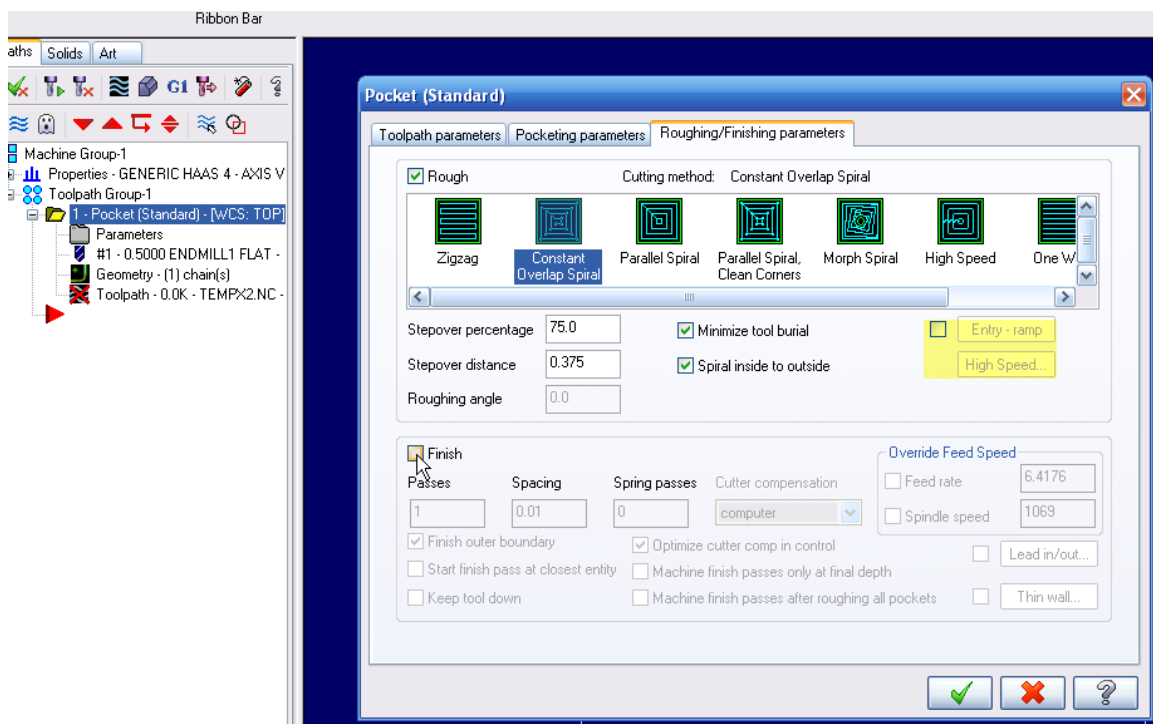


Question/Issue

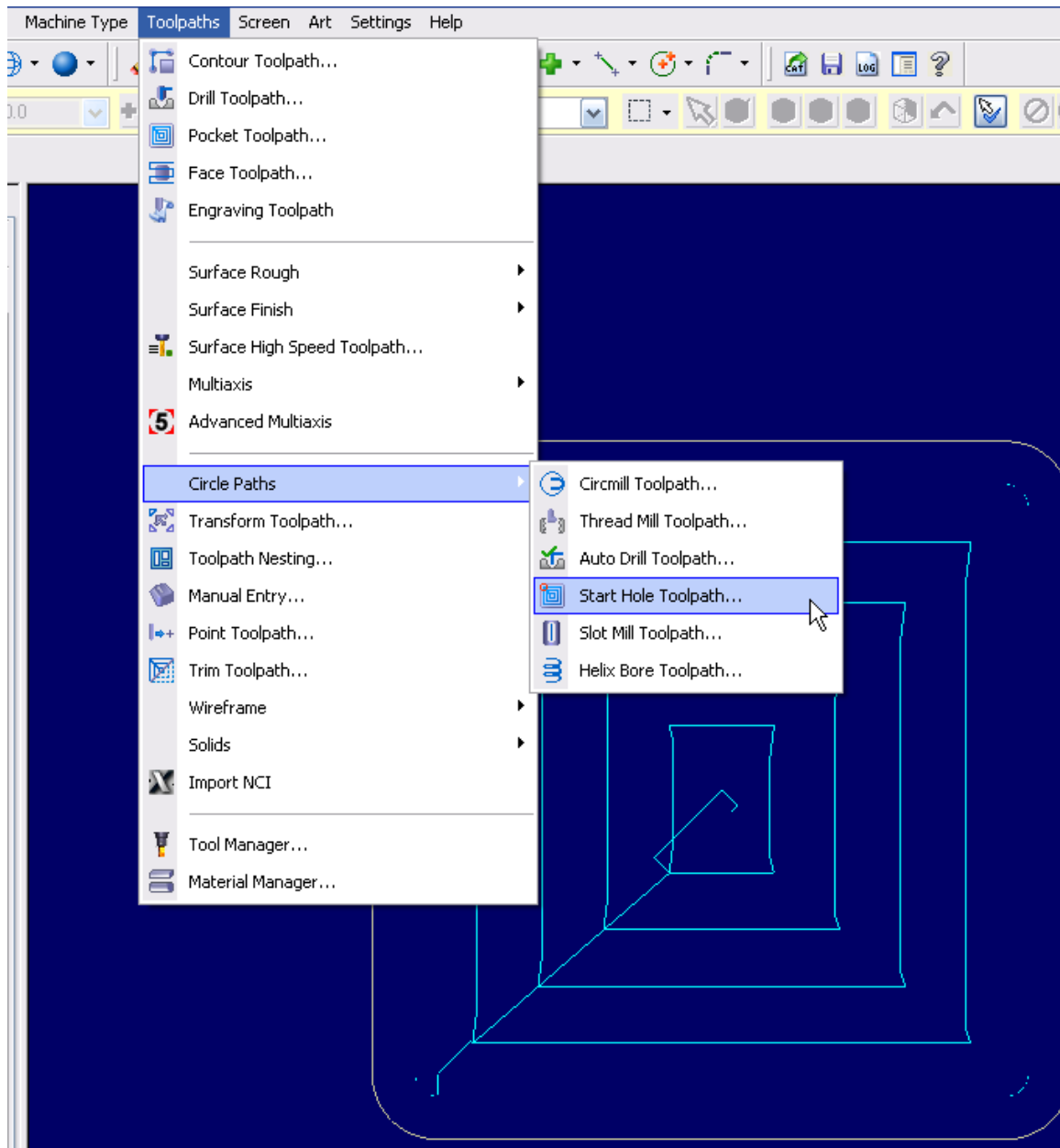
How do you make a no entry pocket?

Pocket Start

A simple pocket routine, with no "Entry".

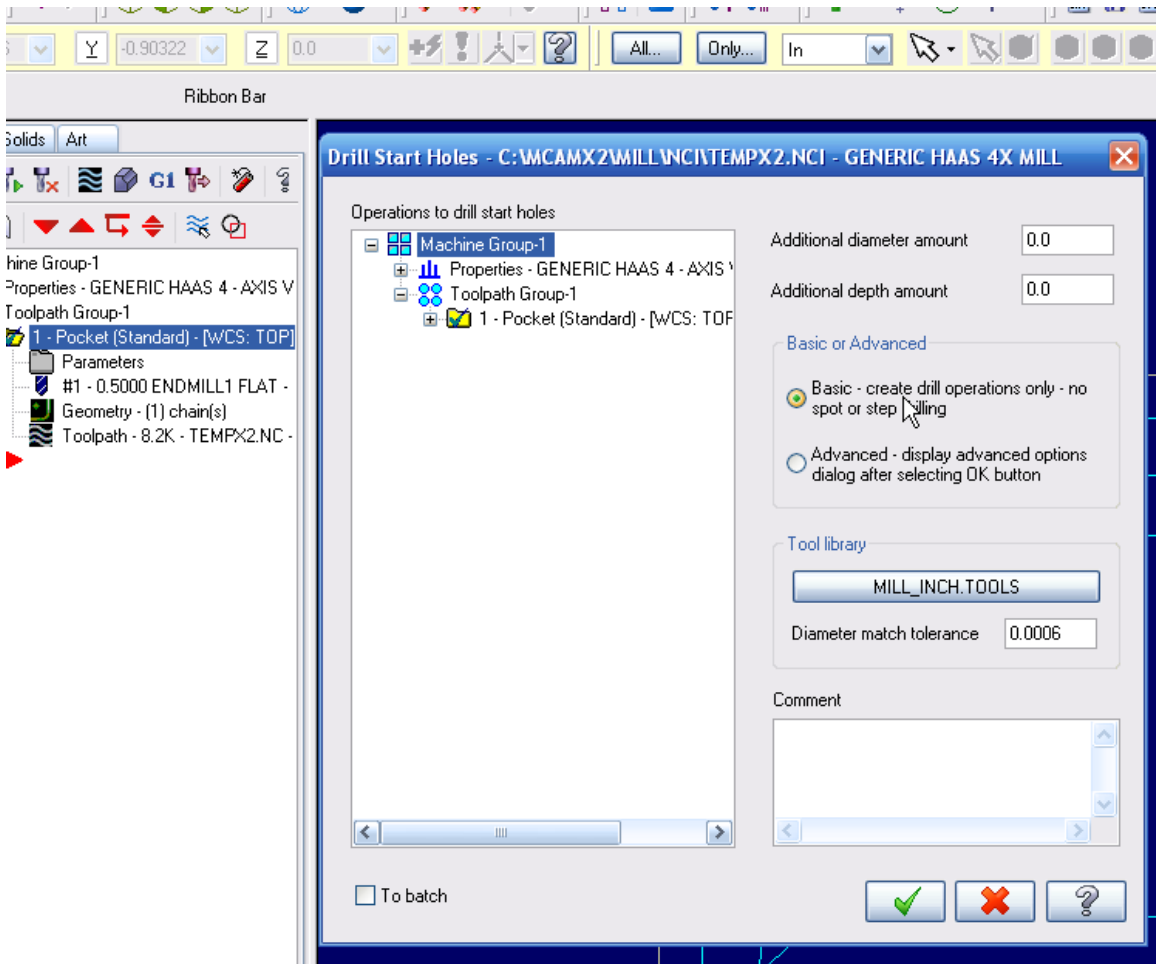


Go to toolpaths, "Circle Paths"



This window will open allowing you to select which operation to select for the “Start Hole” operation.

Note that you can select “Basic” or “Advanced”.



Mastercam will start a new toolpath group, and place the new operation at the top of your operation list.

