

## Question/Issue

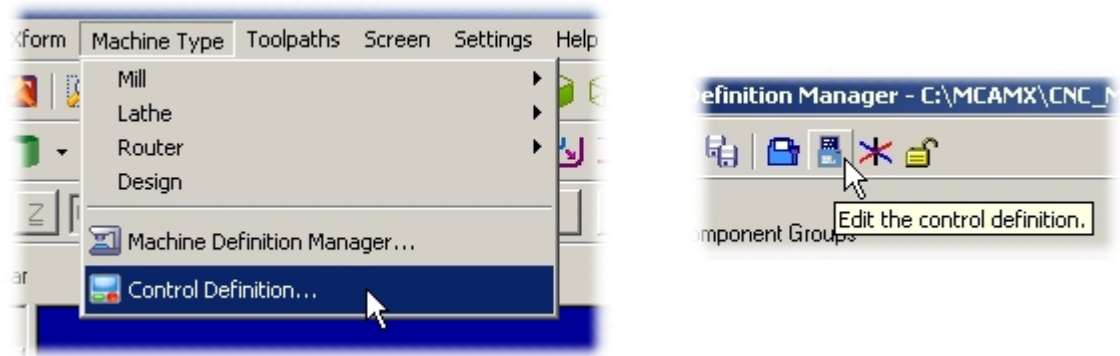
---

Control Definition: How do I start the control definition?

## Answer/Solution

---

X2: You can start the Control Definition Manager by either selecting it from the **Settings** menu, or by clicking a button inside the Machine Definition Manager. If you access it from the Machine Definition Manager, you can only create or edit control definitions of the same type as the machine.



Two different ways to start the Control Definition Manager in X2.

X3, X4: This information is found under your help file in X3 and X4 using the search function.

| Open Control Definition Manager this way...  | ...to do this task   |
|--|--|
| <p>Choose <b>Control Definition Manager</b> from the <b>Settings</b> menu...</p>                 | <p>Edit the active control. You can create a new control with its settings with the "Save as" option.</p>          |
| <p>...then choose the <b>New</b> button.</p>   | <p>Create a new control of any type, starting with a blank (default) control.</p>                                  |
| <p>Choose the <b>Control Definition</b> button from inside the Machine Definition Manager...</p> | <p>Edit the control currently assigned to the machine. You can create a new control with the "Save as" option.</p> |
| <p>...then choose the <b>New</b> button.</p>   | <p>Create a new control of the same type as the machine, starting with a blank (default) control.</p>              |

If you have entered the Machine Definition Manager from the Toolpath Manager, you will only be able to save your changes back to the active machine group. You will not be able to create new control definitions or save your changes to the master copy of the control definition stored on your workstations's hard disk.